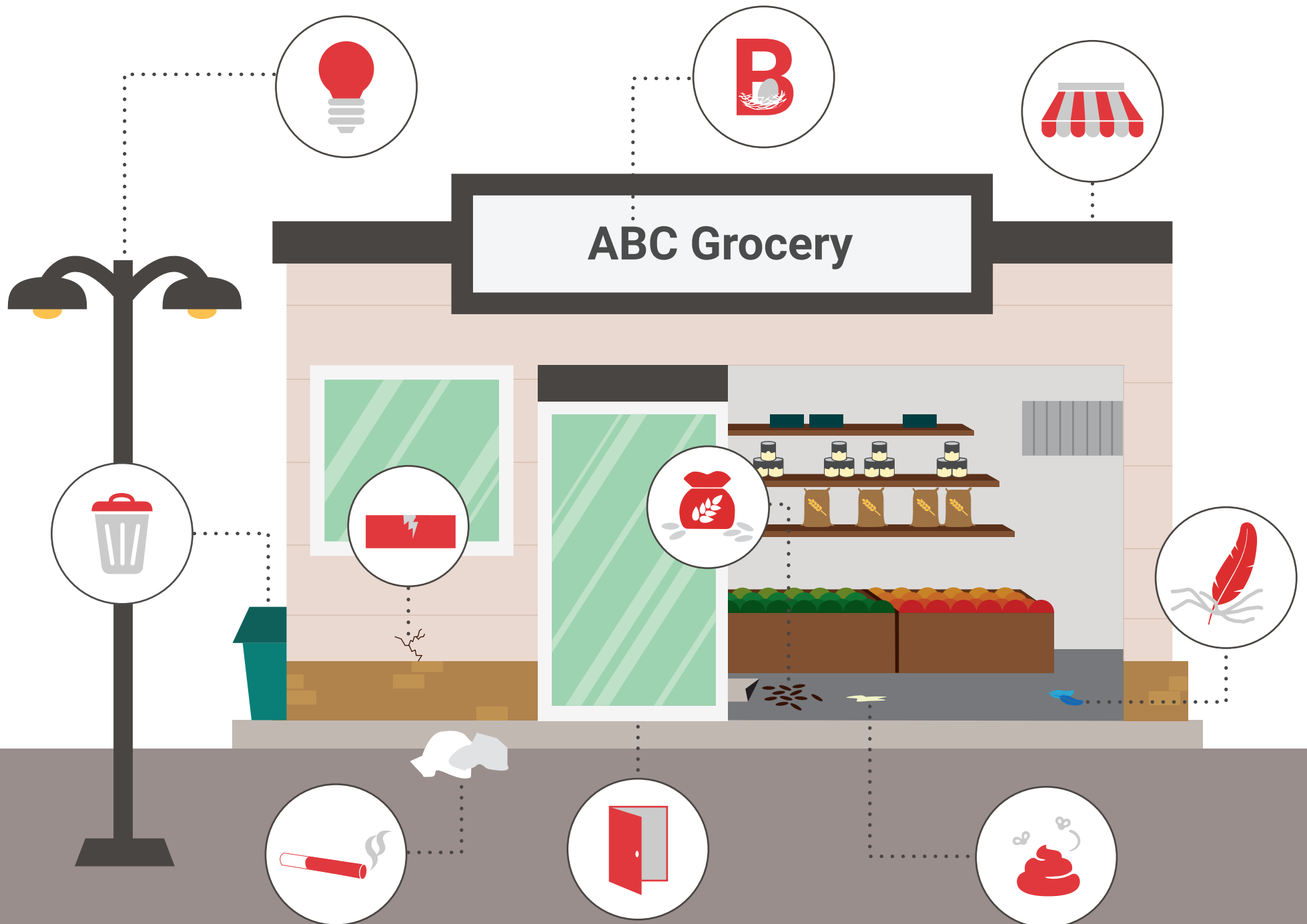


Banning Birds from Your Business

Birds are drawn to food and shelter sources, which they often find in all types of commercial buildings. The best defense against these intruders is to eliminate those attractions and maintain your facility regularly. See below for examples of what could be drawing birds to your business.



Exterior



Signage – Signs are a common place for birds to roost and nest. Droppings can corrode signs and create an unsightly appearance. Nesting material can also lead to a fire hazard if the electric system powering the sign is damaged.



Open doors – Automatic doors and open windows are an easy access point for birds. In fact, some can learn when the doors open and close in time to make their move.



Dumpsters – Naturally, garbage provides a food source for birds. While you can't remove garbage cans and dumpsters from your property, you can regularly empty and clean them, keep them closed or covered, and ensure they're positioned away from windows and doors.



Parking lot lights – Birds hanging around your parking lot are likely roosting nearby, quite possibly on your parking lot lights, and are sticking around for sources of food or nesting materials.



Roofs – Building roofs are the number one place birds might roost and nest, which can lead to roof damage and increased droppings below their roosting points.



Litter – Litter left in parking lots, sidewalks, and outdoor break areas (including smoking areas, as birds will use cigarette buds for nesting materials) should regularly be discarded.



Gaps & Cracks – Birds may be finding their way in through damaged vents, gaps in loading docks, doors with missing sweeps, or other structural flaws. Similar to rodents, birds do not require a very large gap to enter a building.

Interior



Food sources – Birds will stick around if there's a food source. Spillage should be cleaned up as quickly as possible, workstation should be kept cleaned and sanitized, and alternative storage methods may need to be put into place for things like grass or bird seed.



Droppings – Bird droppings inside your building are a clear indicator you have an issue and need a professional right away. Droppings can transmit disease, and cause slip and fall accidents.



Feathers and Nesting Material – Finding evidence of birds, such as feathers and nesting material, is another indication that birds have found their way inside. Feathers and nesting materials can contaminate product and pose health risks.

Visit Copesan.com/Birds for more information.